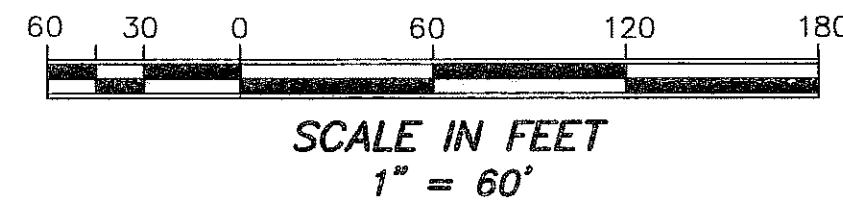


OWENS BAKER PLAT

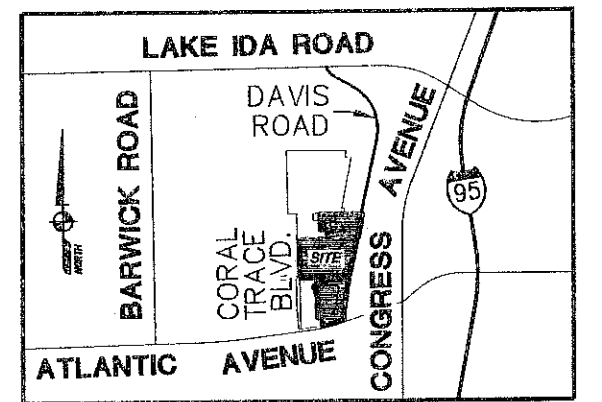
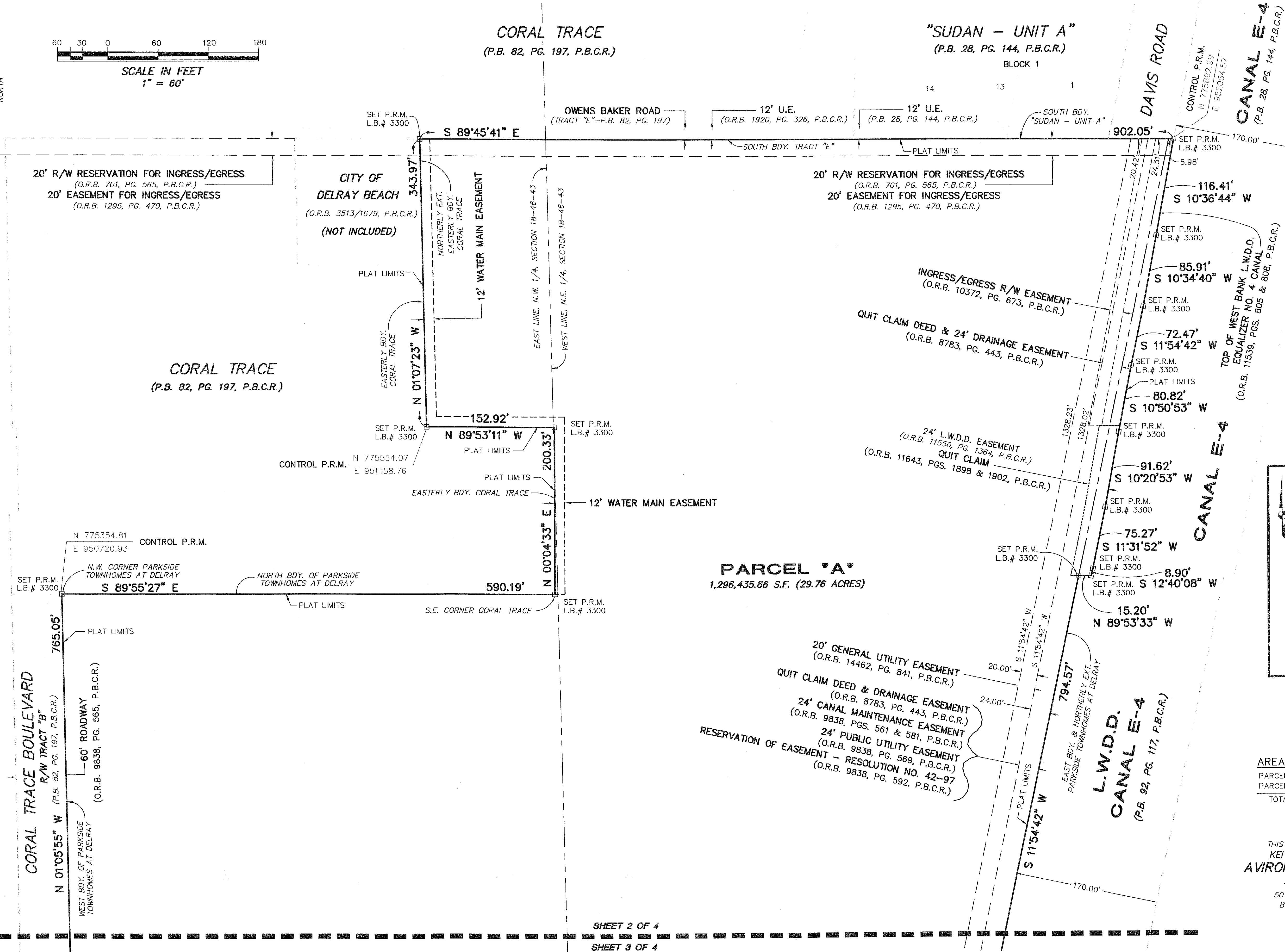
BEING A RE-PLAT OF A PORTION OF 'TEMPLE SINAI OF PALM BEACH COUNTY' (P.B. 46, PG. 53, P.B.C.R.); A PORTION OF 'REPLAT OF PART BREEZY RIDGE ESTATES' (P.B. 24, PG. 116, P.B.C.R.); ALL OF 'PARKSIDE TOWNHOMES AT DELRAY' (P.B. 92, PG. 117, P.B.C.R.) AND A PORTION OF SECTION 18, TOWNSHIP 46 SOUTH, RANGE 43 EAST SITUATE IN SECTION 18, TOWNSHIP 46 SOUTH, RANGE 43 EAST, CITY OF DELRAY BEACH, PALM BEACH COUNTY, FLORIDA.



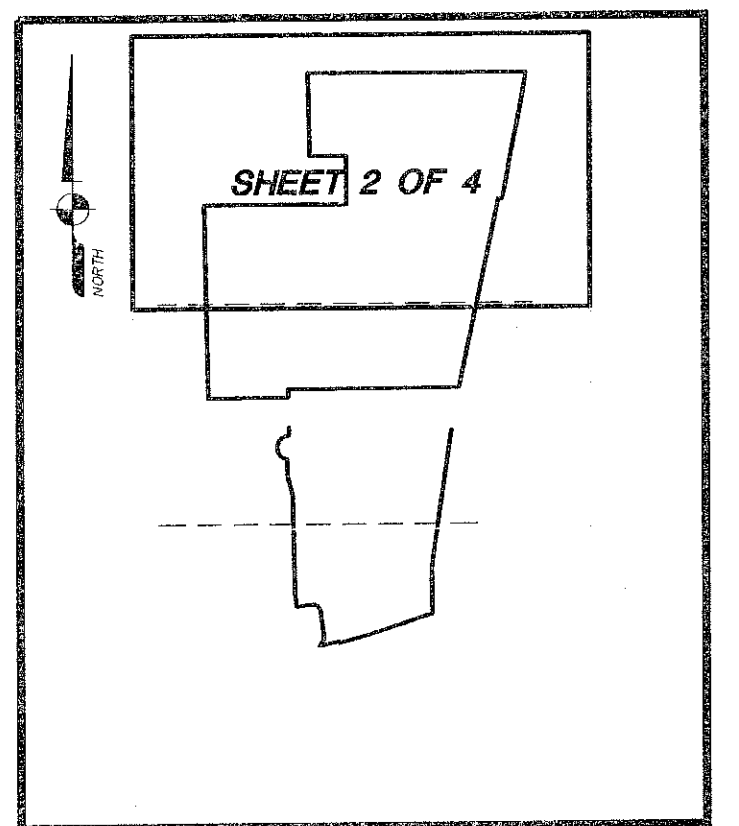
STATE OF FLORIDA
COUNTY OF PALM BEACH
This plat was filed for record at this _____ day of _____, 2006, and duly recorded in Plat Book _____, Pages _____, through _____.

SHARON R. BOCK
Clerk & Comptroller
By: _____ D.C.

SHEET 2 OF 4



LOCATION MAP
NOT TO SCALE



SHEET KEY

AREA TABULATION:

PARCEL A =	1,296,435.66 S.F.	29.76 ACRES
PARCEL B =	547,327.23 S.F.	12.57 ACRES
TOTAL	1,843,762.89 S.F.	42.33 ACRES

THIS INSTRUMENT WAS PREPARED BY:
KEITH M. CHEE-A-TOW, P.L.S.
AVIROM & ASSOCIATES, INC.
SURVEYING & MAPPING
50 S.W. 2nd AVENUE, SUITE 102
BOCA RATON, FLORIDA 33432
(561) 392-2594
JULY, 2004